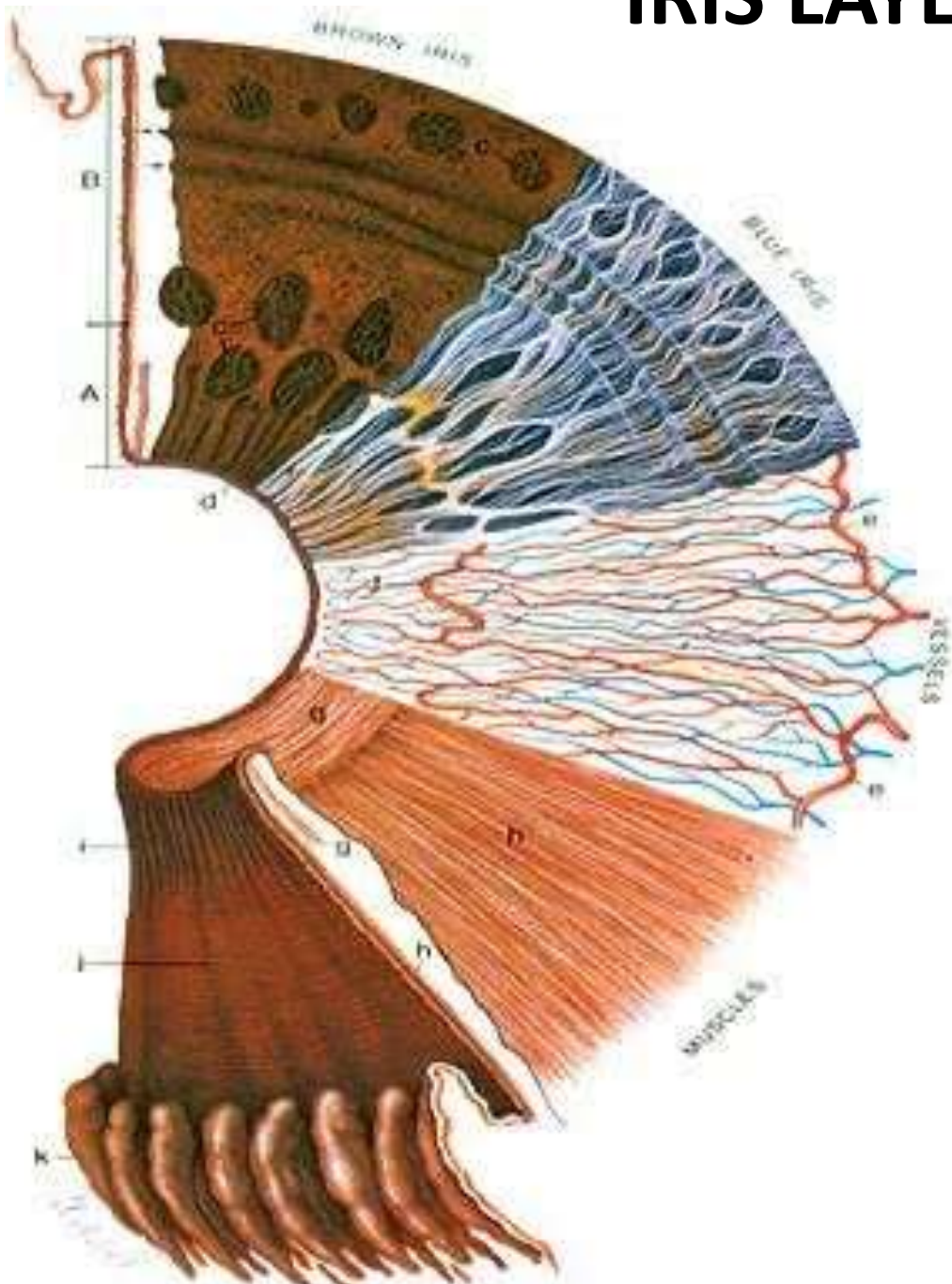


The Iris melanin depigmentation

تفتيح ميلانين القرنية

Prof Dr Osama Al Nahrawy

IRIS LAYERS

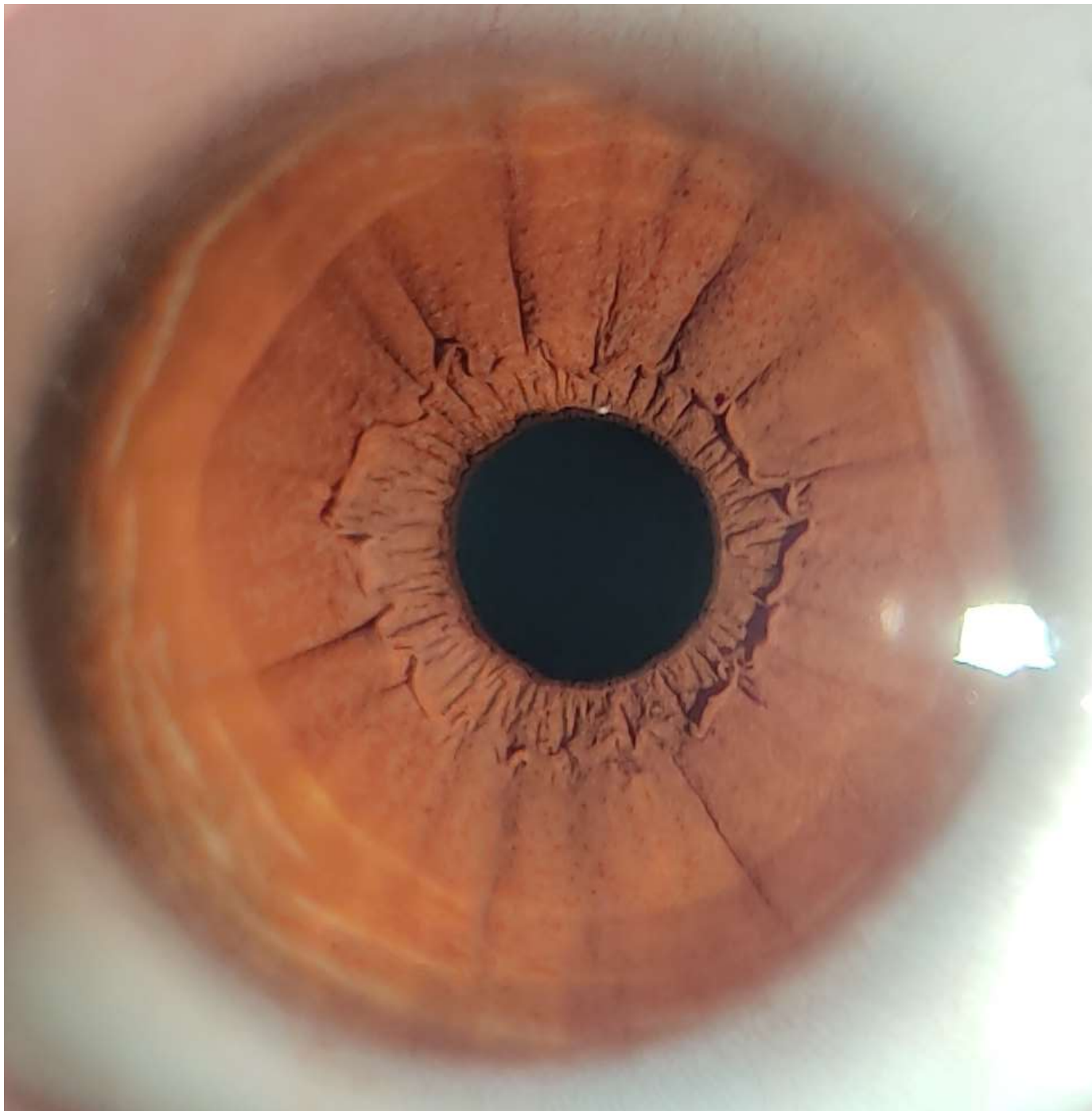


1. Surface melanin

2. Collagen fibers

3. The vessels.

4. The muscles.



Dark colored eye. Brown melanin is covering the iris surface. The collagen is covered and is invisible.

Natural light blue eye





Natural eye, light blue color.

The iris collagen strands are clearly visible.

There are other iris features; like collarette, iris crypts, iris nevus.

The pupillary area shows some degree of surface melanin of yellow color



PROFESSOR/ OSAMA AL NAHRAWY,

**An eye, grade 3, HAZEL, before laser depigmentation.
The melanin covers the collagen**



Same eye, after laser depigmentation. The collagen FIBERS BECAME VISIBLE.



A good example of a top responder, depigmentation of the lower half of the iris, The collagen is exposed or uncovered. A significant lightening is the result.

